

COUNTY ROAD over I 70 ML

Structure No.
F-19-AF

This bridge has been selected as one of the Region's high priority structures due to Safety and Mobility risks associated with the condition of the bridge deck and high level of maintenance that is required to keep this bridge in service. This structure has been vetted through a process developed by the R1 Bridge Prioritization Program, led by Staff Bridge and the Region in coordination with Bridge Preventative Maintenance (BPM) and Colorado Bridge Enterprise (CBE).

Location

COUNTY ROAD over I 70 ML

Adams County

CDOT Region 1

Treatment

Full Bridge Replacement

Description

- Region 1 program: South
- Year Built: 1959
- Height Restricted: No
- Load Restricted: No
- Scour Critical: N/A
- BE Eligible: Yes
- Twin Structure: N/A

Bridges considered for Bundling*

- Stand Alone

PD14 Metrics Addressed

- Bridge Deck Area rated POOR
- Bridge Deck Area UNPROTECTED

Urgent Need

- Safety: Poor deck condition results in potholes and falling concrete debris on traffic, which necessitates repairs resulting in traffic backups and increased potential for severe rear end collisions.
- Mobility: Lane or bridge closures required for repairs result in significant delays and increased congestion on primary and secondary service roads.

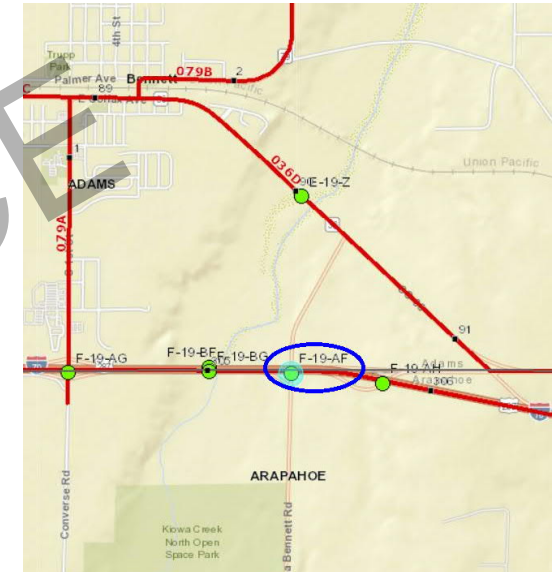
Benefits If Funded

- Safety benefits include:
 - ❖ Eliminate potential falling concrete debris hazards on traffic
 - ❖ Significantly reduce lane and bridge closures resulting in traffic backups and potentially severe rear end collisions
- Mobility benefits include:
 - ❖ Reduce maintenance including lane and bridge closures and associated detours
 - ❖ Increase service life (Current AASHTO Bridge Design Guidelines indicate a 75-year design life)

The benefits above will improve safety and mobility, relieving congestion on secondary service roads used for lengthy detours while reducing Green House Gas pollution.

2021 Planning Level Bridge Replacement Estimate

\$10,500,000



COLORADO
Department of Transportation

* Bundling bridges to take advantage of the economy of scale is highly encouraged and viable project bundles have been identified by the vetting team. Bridges selected to be bundled will depend upon the available funding for the project.